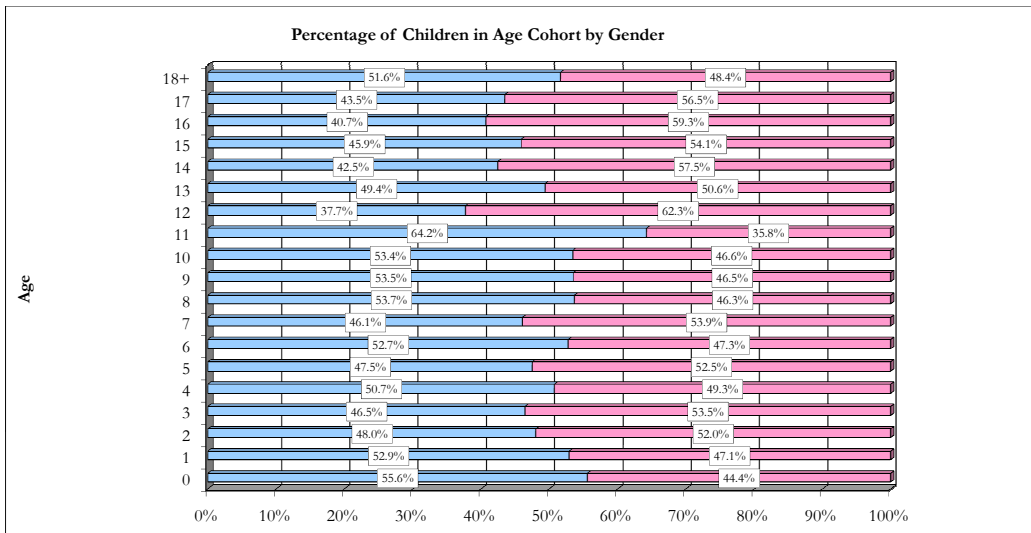
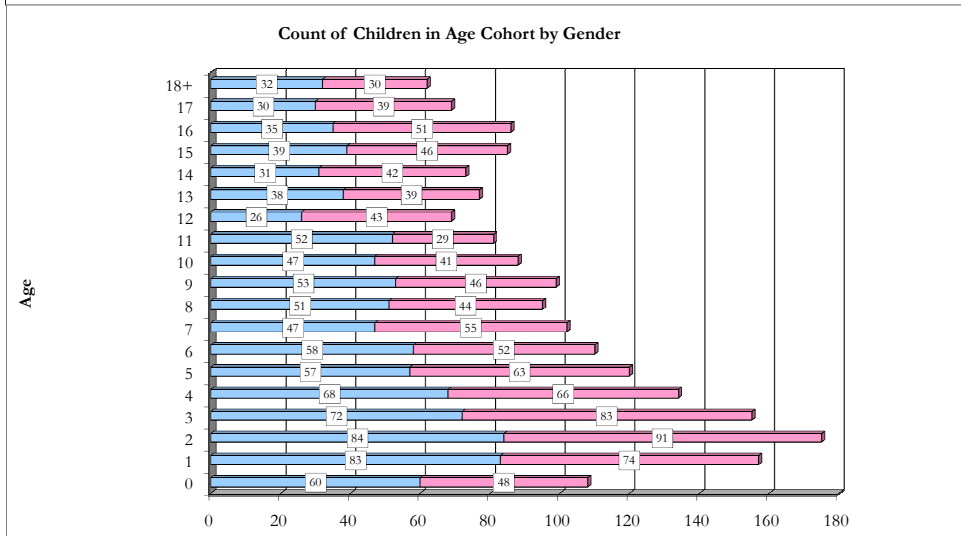


**All Children in Alaska OCS Out-of-home Placement for the Month of August, 2010, by Gender and Age.**



Age	Male	Female
0	60	48
1	83	74
2	84	91
3	72	83
4	68	66
5	57	63
6	58	52
7	47	55
8	51	44
9	53	46
10	47	41
11	52	29
12	26	43
13	38	39
14	31	42
15	39	46
16	35	51
17	30	39
18+	32	30



Out-of-home placement is the last option considered when reasonable efforts to protect a child in his or her own home have been exhausted by OCS. The first preference considered in all out-of-home placements for a child or youth is a relative's home. When it is not possible to place a child with a relative it is necessary to place the child in a licensed foster home. Residential care facilities may offer short-term emergency shelter as well as more long-term residential treatment.

All Children in Alaska OCS Out-of-home placement for the month of August, 2010. Age is the age of the child (in years) on August 31, 2010.

Data Source: ORCA. Program used to tabulate statistics: monthly\_ooh\_web.sas.  
 Data in this report is current as of September 10, 2010. Subsequent reports with the same date parameter will contain up-dated statistics.  
 if you have any questions regarding this data please forward your inquiry to [oc@alaska.gov](mailto:oc@alaska.gov)