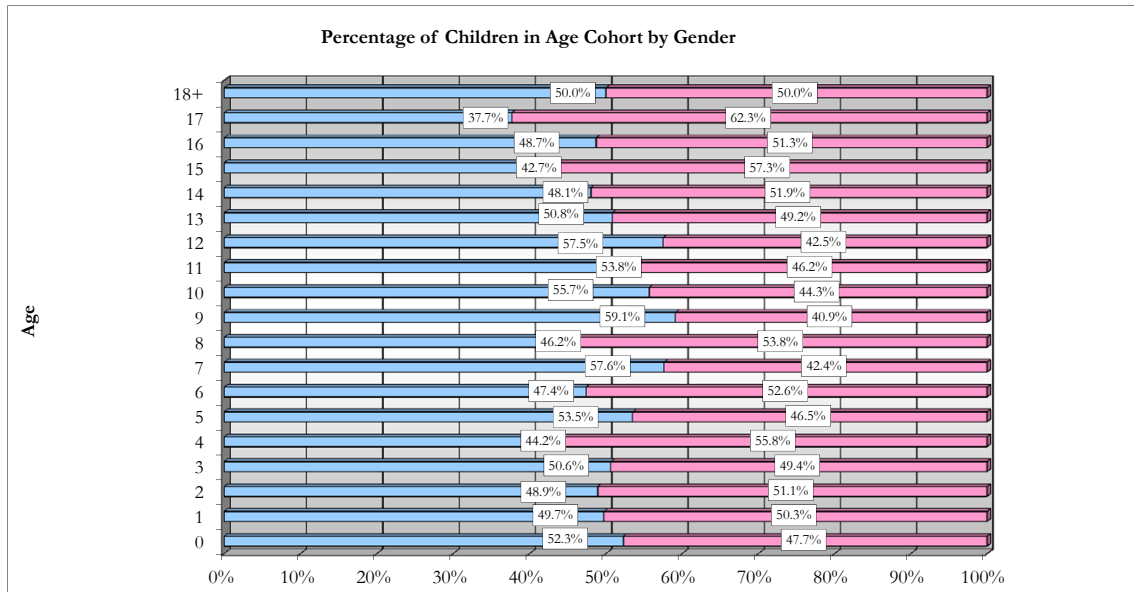
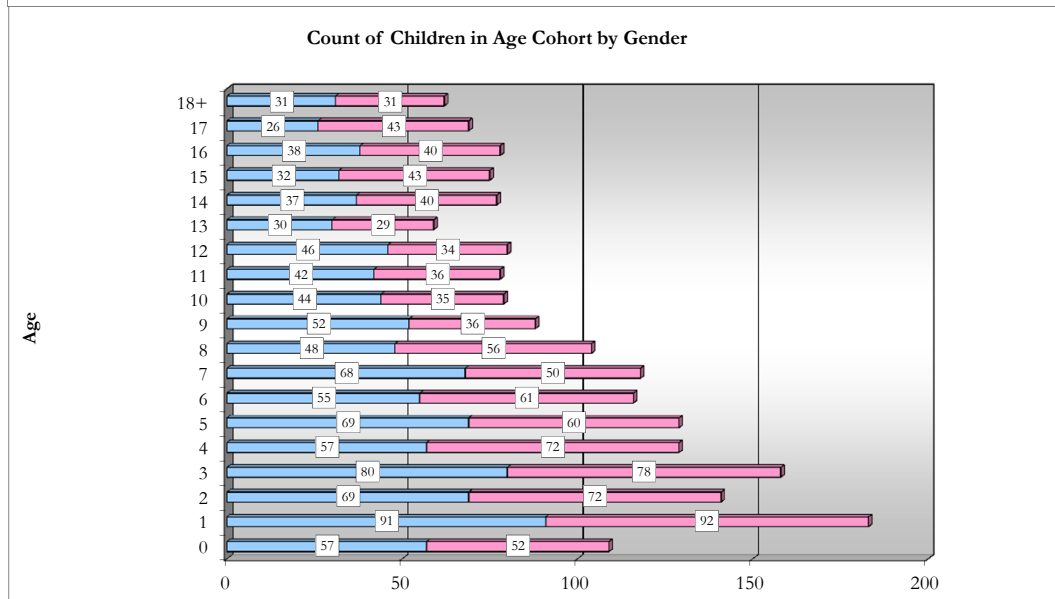


All Children in Alaska OCS Out-of-home Placement for the Month of July, 2011, by Gender and Age.



Age	Male	Female
0	57	52
1	91	92
2	69	72
3	80	78
4	57	72
5	69	60
6	55	61
7	68	50
8	48	56
9	52	36
10	44	35
11	42	36
12	46	34
13	30	29
14	37	40
15	32	43
16	38	40
17	26	43
18+	31	31



Out-of-home placement is the last option considered when reasonable efforts to protect a child in his or her own home have been exhausted by OCS. The first preference considered in all out-of-home placements for a child or youth is a relative's home. When it is not possible to place a child with a relative it is necessary to place the child in a licensed foster home. Residential care facilities may offer short-term emergency shelter as well as more long-term residential treatment.

All Children in Alaska OCS Out-of-home placement for the month of July, 2011. Age is the age of the child (in years) on July 31, 2011.

Data Source: ORCA. Program used to tabulate statistics: monthly_ooH_web.sas.
 Data in this report is current as of September 14, 2011. Subsequent reports with the same date parameter will contain up-dated statistics.
 if you have any questions regarding this data please forward your inquiry to ocs@alaska.gov