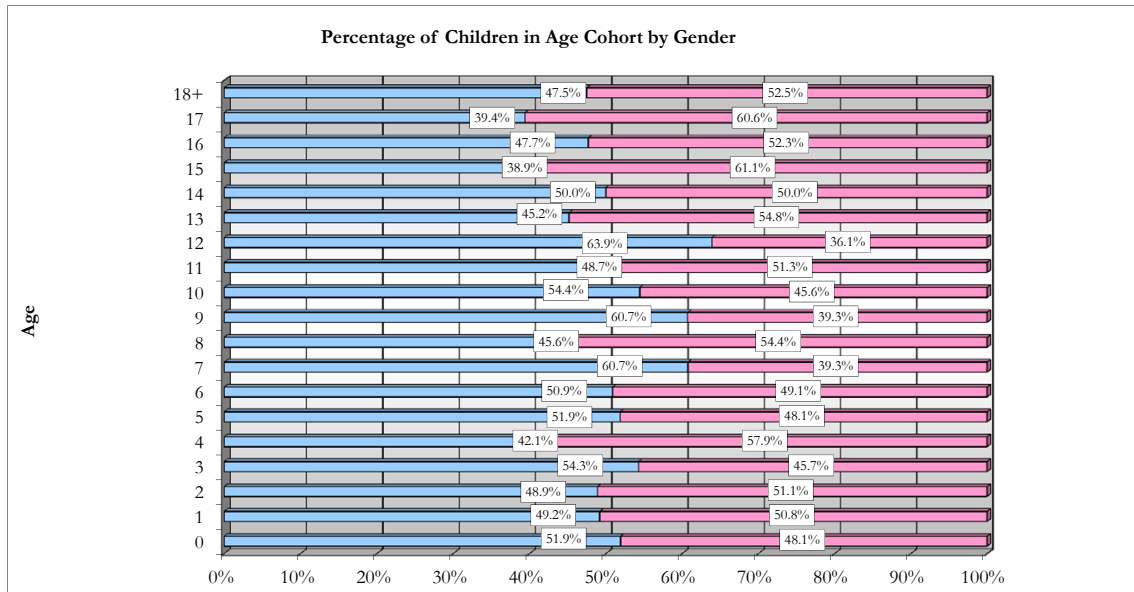
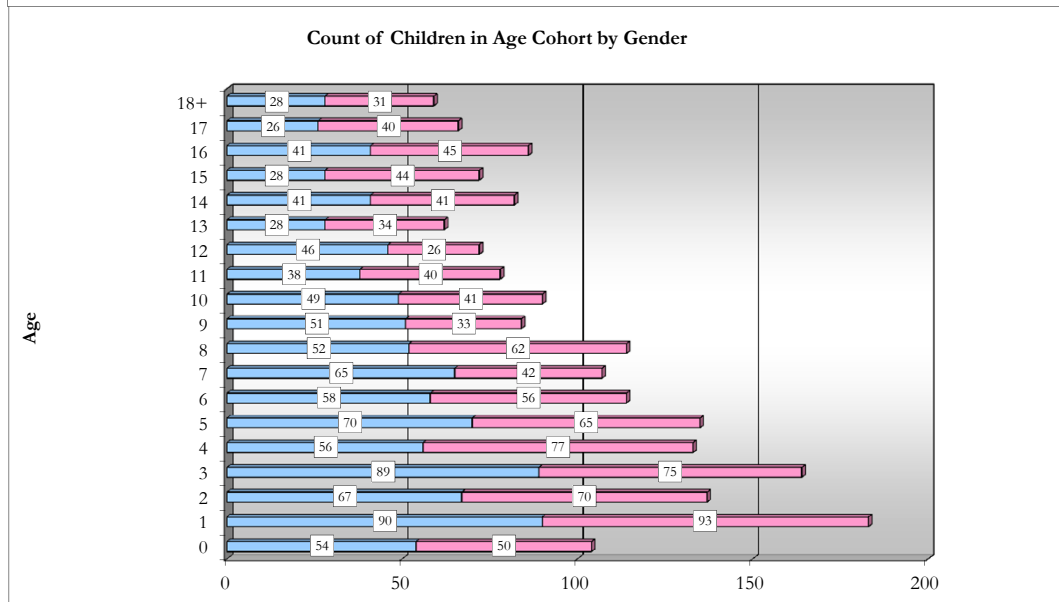


All Children in Alaska OCS Out-of-home Placement for the Month of August, 2011, by Gender and Age.



Age	Male	Female
0	54	50
1	90	93
2	67	70
3	89	75
4	56	77
5	70	65
6	58	56
7	65	42
8	52	62
9	51	33
10	49	41
11	38	40
12	46	26
13	28	34
14	41	41
15	28	44
16	41	45
17	26	40
18+	28	31



Out-of-home placement is the last option considered when reasonable efforts to protect a child in his or her own home have been exhausted by OCS. The first preference considered in all out-of-home placements for a child or youth is a relative's home. When it is not possible to place a child with a relative it is necessary to place the child in a licensed foster home. Residential care facilities may offer short-term emergency shelter as well as more long-term residential treatment.

All Children in Alaska OCS Out-of-home placement for the month of August, 2011. Age is the age of the child (in years) on August 31, 2011.

Data Source: ORCA. Program used to tabulate statistics: monthly_ooH_web.sas.
 Data in this report is current as of September 14, 2011. Subsequent reports with the same date parameter will contain up-dated statistics.
 if you have any questions regarding this data please forward your inquiry to ocs@alaska.gov