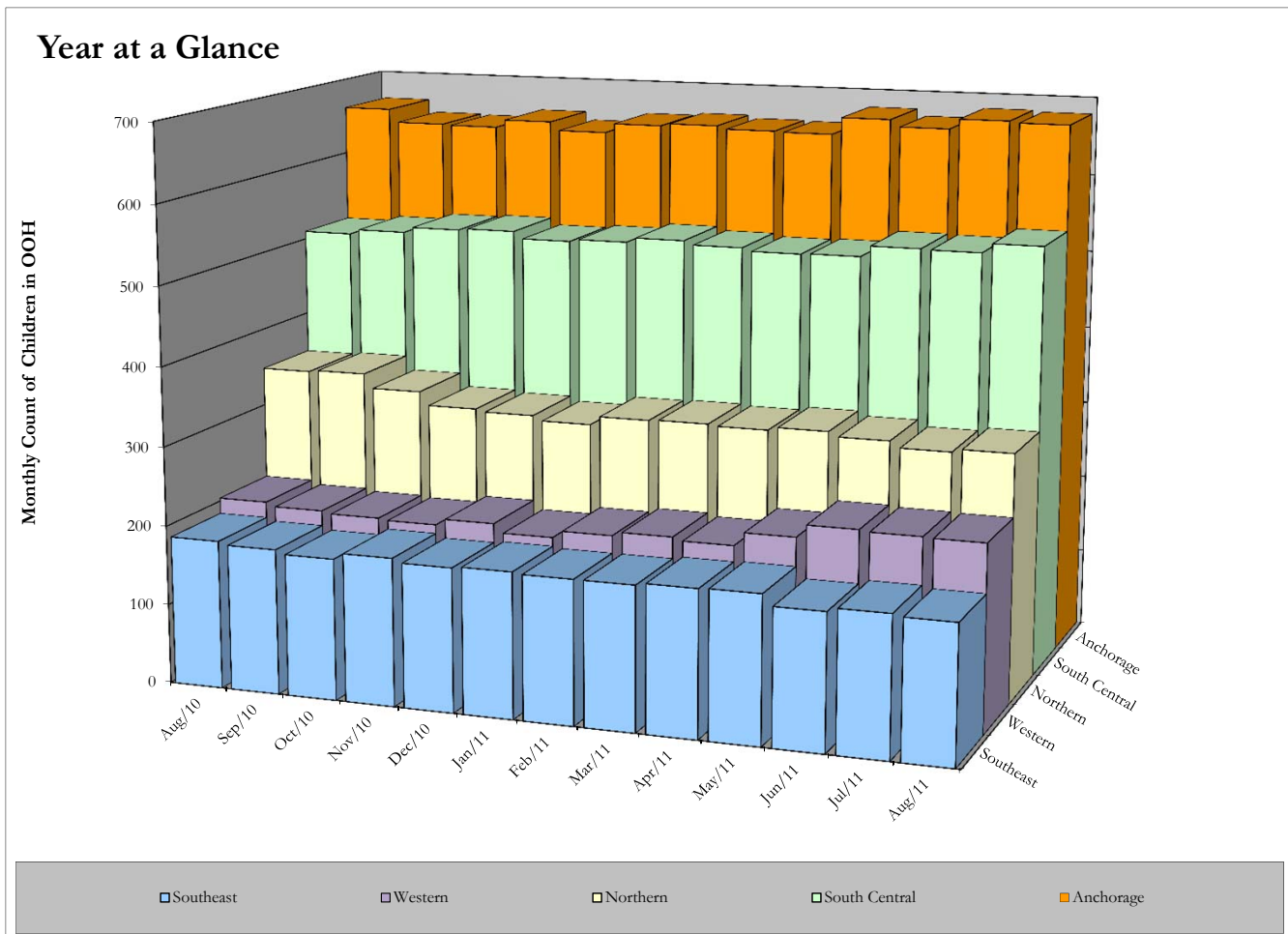


All Children in Alaska OCS Out-of-home placement between August, 2010, and August, 2011, by Region.

Region	Aug-10	Sep-10	Oct-10	Nov-10	Dec-10	Jan-11	Feb-11	Mar-11	Apr-11	May-11	Jun-11	Jul-11	Aug-11
Anchorage	663	646	645	655	644	656	659	655	654	676	667	680	678
Northern	351	353	335	318	315	309	320	321	319	323	317	309	313
South Central	512	518	525	527	518	521	527	522	518	519	533	532	544
Southeast	187	183	178	186	181	183	181	181	184	185	171	176	173
Western	207	202	199	197	205	194	203	208	204	221	237	235	234
Total	1,920	1,902	1,882	1,883	1,863	1,863	1,890	1,887	1,879	1,924	1,925	1,932	1,942

Out-of-home placement is the last option considered when reasonable efforts to protect a child in his or her own home have been exhausted by OCS. The first preference considered in all out-of-home placements for a child or youth is a relative's home. When it is not possible to place a child with a relative it is necessary to place the child in a licensed foster home. Residential care facilities may offer short-term emergency shelter as well as more long-term residential treatment.



Data Source: ORCA. Program used to tabulate statistics: monthly_ooh_web.sas.
 Data in this report is current as of September 14, 2011. Subsequent reports with the same date parameter will contain up-dated statistics.
 If you have any questions regarding this data please forward your inquiry to ocs@alaska.gov.