

Allegations Received and Screened In During the Month of September, 2011.

Allegations screened during the month of September, 2011.

Maltreatment Type	Allegations	Victims	Perpetrators
Mental Injury	483	354	271
Neglect	2,356	1,580	1,231
Physical Abuse	462	383	350
Sexual Abuse	191	169	147
Total	3,492	2,010	1,692

Count is the number of allegations by maltreatment type.
Victims is the unique count of alleged victims by maltreatment type.
Perpetrators is the unique count of alleged perpetrators by maltreatment type.

Some children have more than one alleged maltreatment type; maltreatments in this report are counted once per type, per child.
 Some perpetrators have more than one alleged maltreatment type; maltreatments in this report are counted once per type, per child.
 Allegations are required to be screened (in or out) within 1-7 days of being received.

Protective Service Reports received during the month of September, 2011.

Protective Service Reports 1,439

PSR's may report multiple allegations (alleged occurrences of maltreatment), each matching one victim and one perpetrator. This explains why allegations of maltreatment outnumber reports (PSR's) of these maltreatments.

Allegations screened in during the month of September, 2011.

Maltreatment Type	Allegations	Victims	Perpetrators
Mental Injury	314	224	170
Neglect	1,119	779	611
Physical Abuse	208	183	159
Sexual Abuse	79	69	55
Total	1,720	965	810

Count is the number of allegations screened in for initial assessment of the maltreatment type.
Victims is the unique count of alleged victims by maltreatment type.
Perpetrators is the unique count of alleged perpetrators by maltreatment type.

Some children have more than one alleged maltreatment type; maltreatments in this report are counted once per type, per child.
 Some perpetrators have more than one alleged maltreatment type; maltreatments in this report are counted once per type, per child.

Protective Service Reports screened in during the month of September, 2011.

Protective Service Reports 583

PSR's may report multiple allegations (alleged occurrences of maltreatment), each matching one victim and one perpetrator. This explains why allegations of maltreatment outnumber reports (PSR's) of these maltreatments.

Composition of Sample Protective Service Report (PSR)

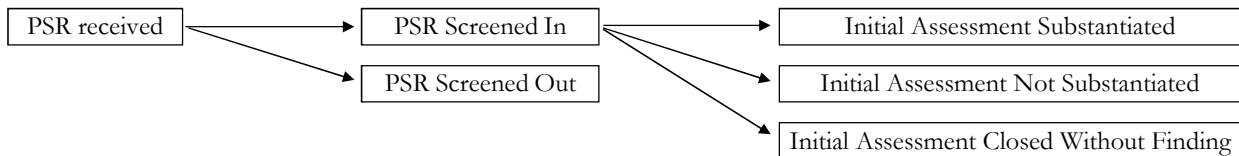
PSR

- Alleged Victim 1
 - Allegation 1 - Alleged Perpetrator 1
 - Allegation 2 - Alleged Perpetrator 2
- Alleged Victim 2
 - Allegation 3 - Alleged Perpetrator 1
 - Allegation 4 - Alleged Perpetrator 2

For this example - assume a reporter alleges their neighbors (a mother and father) neglect their son and daughter. Child one has one allegation of neglect from his father and one allegation of neglect from his mother. Child two has one allegation of neglect from her father and one allegation of neglect from her mother. The sample PSR has four counts of maltreatment, two victims, and two perpetrators.

Protective Service Reports contain one or more allegations.
 Initial Assessments include one or more Protective Service Reports.
 The initial assessment of Protective Service Reports are not always administratively finalized the month they are received.

Administrative Process for Assessing Protective Service Reports (PSR)



Data Source: ORCA. Program used to tabulate statistics: Monthly_IA_Web.sas
 Data in this report is as of October 4, 2011. Subsequent reports with the same date parameter will contain up-dated statistics.
 If you have any questions regarding this data please forward your inquiry to ocs@alaska.gov.