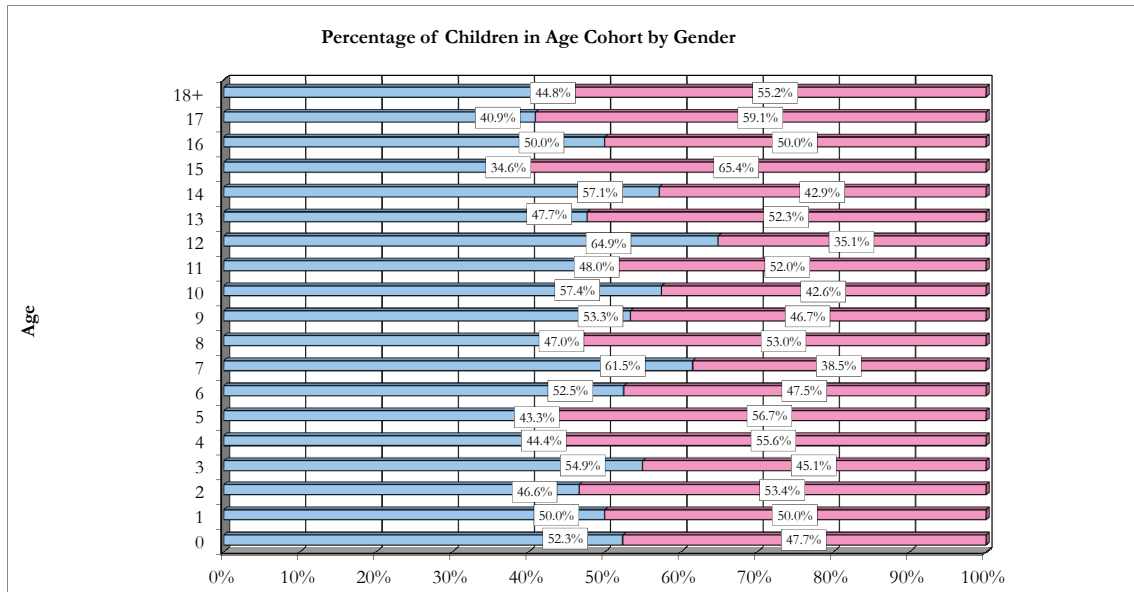
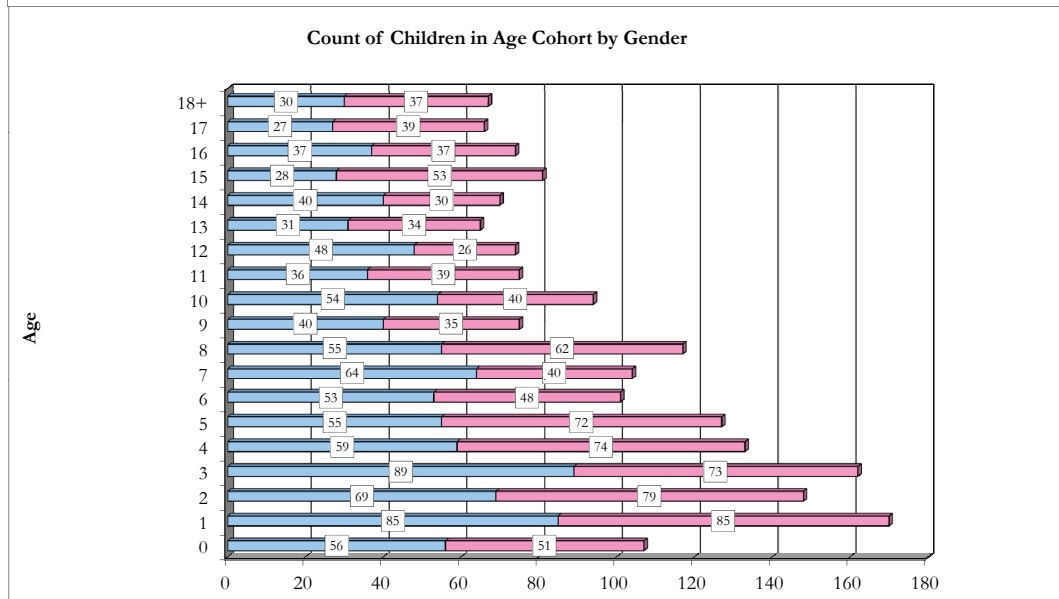


### All Children in Alaska OCS Out-of-home Placement for the Month of October, 2011, by Gender and Age.



Age	Male	Female
0	56	51
1	85	85
2	69	79
3	89	73
4	59	74
5	55	72
6	53	48
7	64	40
8	55	62
9	40	35
10	54	40
11	36	39
12	48	26
13	31	34
14	40	30
15	28	53
16	37	37
17	27	39
18+	30	37



Out-of-home placement is the last option considered when reasonable efforts to protect a child in his or her own home have been exhausted by OCS. The first preference considered in all out-of-home placements for a child or youth is a relative's home. When it is not possible to place a child with a relative it is necessary to place the child in a licensed foster home. Residential care facilities may offer short-term emergency shelter as well as more long-term residential treatment.

All Children in Alaska OCS Out-of-home placement for the month of October, 2011. Age is the age of the child (in years) on October 31, 2011.

Data Source: ORCA. Program used to tabulate statistics: monthly\_ooH\_web.sas.  
 Data in this report is current as of November 3, 2011. Subsequent reports with the same date parameter will contain up-dated statistics.  
 if you have any questions regarding this data please forward your inquiry to ocs@alaska.gov