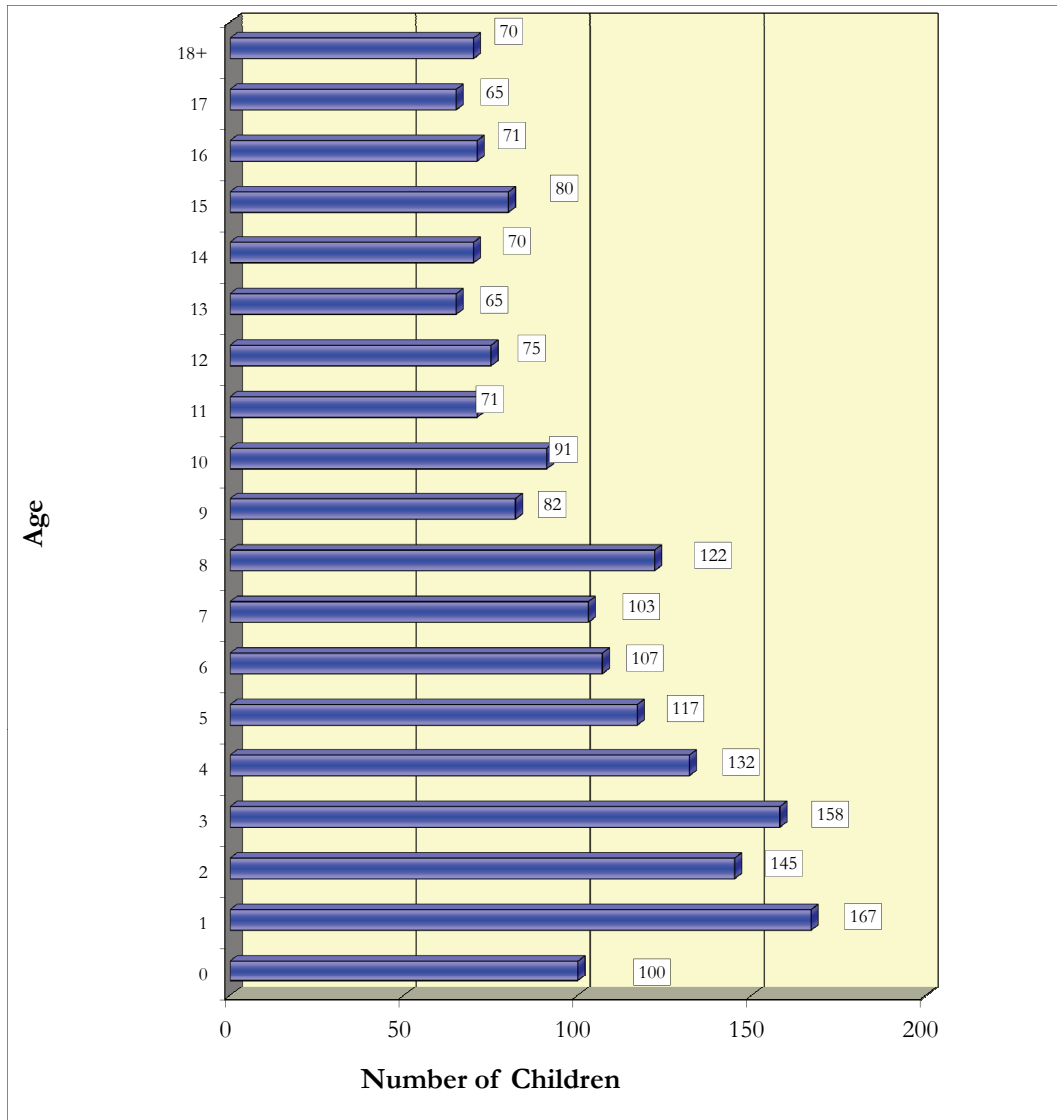


All Children in Alaska OCS Out-of-home placement for the month of November, 2011, by Age.



Age	Number of children		
	Count	%	Running Total
0	100	5.29%	100
1	167	8.83%	267
2	145	7.67%	412
3	158	8.36%	570
4	132	6.98%	702
5	117	6.19%	819
6	107	5.66%	926
7	103	5.45%	1,029
8	122	6.45%	1,151
9	82	4.34%	1,233
10	91	4.81%	1,324
11	71	3.75%	1,395
12	75	3.97%	1,470
13	65	3.44%	1,535
14	70	3.70%	1,605
15	80	4.23%	1,685
16	71	3.75%	1,756
17	65	3.44%	1,821
18+	70	3.70%	1,891

Out-of-home placement is the last option considered when reasonable efforts to protect a child in his or her own home have been exhausted by OCS. The first preference considered in all out-of-home placements for a child or youth is a relative's home. When it is not possible to place a child with a relative it is necessary to place the child in a licensed foster home. Residential care facilities may offer short-term emergency shelter as well as more long-term residential treatment.

All Children in Alaska OCS Out-of-home placement for the month of November, 2011. Age is the age of the child (in years) on November 30, 2011.

Data Source: ORCA. Program used to tabulate statistics: monthly_ooh_web.sas.
 Data in this report is current as of December, 2011. Subsequent reports with the same date parameter will contain up-dated statistics.
 If you have any questions regarding this data please forward your inquiry to ocs@alaska.gov.