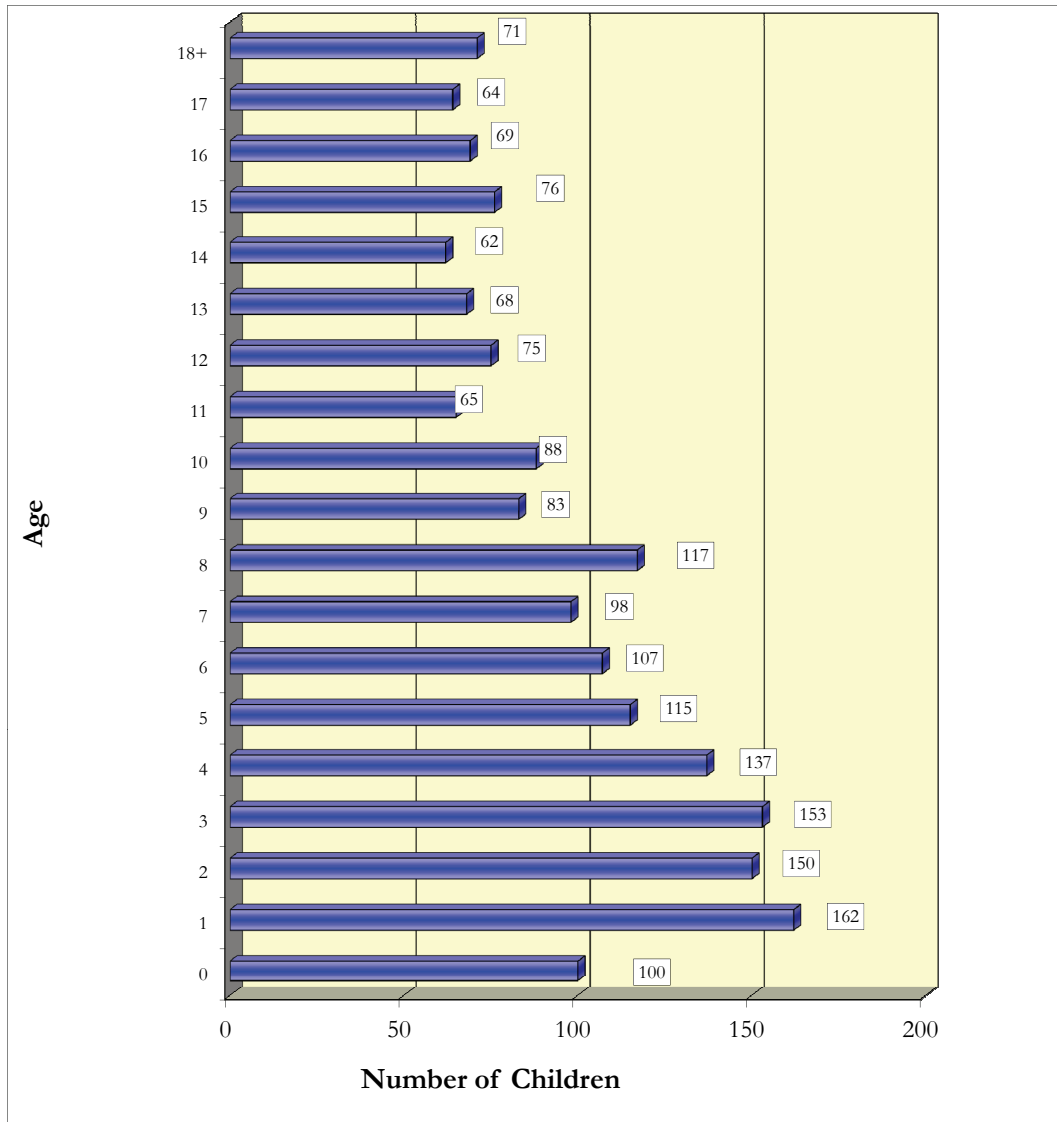


All Children in Alaska OCS Out-of-home placement for the month of December, 2011, by Age.



Age	Number of children		
	Count	%	Running Total
0	100	5.38%	100
1	162	8.71%	262
2	150	8.06%	412
3	153	8.23%	565
4	137	7.37%	702
5	115	6.18%	817
6	107	5.75%	924
7	98	5.27%	1,022
8	117	6.29%	1,139
9	83	4.46%	1,222
10	88	4.73%	1,310
11	65	3.49%	1,375
12	75	4.03%	1,450
13	68	3.66%	1,518
14	62	3.33%	1,580
15	76	4.09%	1,656
16	69	3.71%	1,725
17	64	3.44%	1,789
18+	71	3.82%	1,860

Out-of-home placement is the last option considered when reasonable efforts to protect a child in his or her own home have been exhausted by OCS. The first preference considered in all out-of-home placements for a child or youth is a relative's home. When it is not possible to place a child with a relative it is necessary to place the child in a licensed foster home. Residential care facilities may offer short-term emergency shelter as well as more long-term residential treatment.

All Children in Alaska OCS Out-of-home placement for the month of December, 2011. Age is the age of the child (in years) on December 31, 2011.

Data Source: ORCA. Program used to tabulate statistics: monthly_ooh_web.sas.
 Data in this report is current as of January, 2012. Subsequent reports with the same date parameter will contain up-dated statistics.
 If you have any questions regarding this data please forward your inquiry to ocs@alaska.gov.