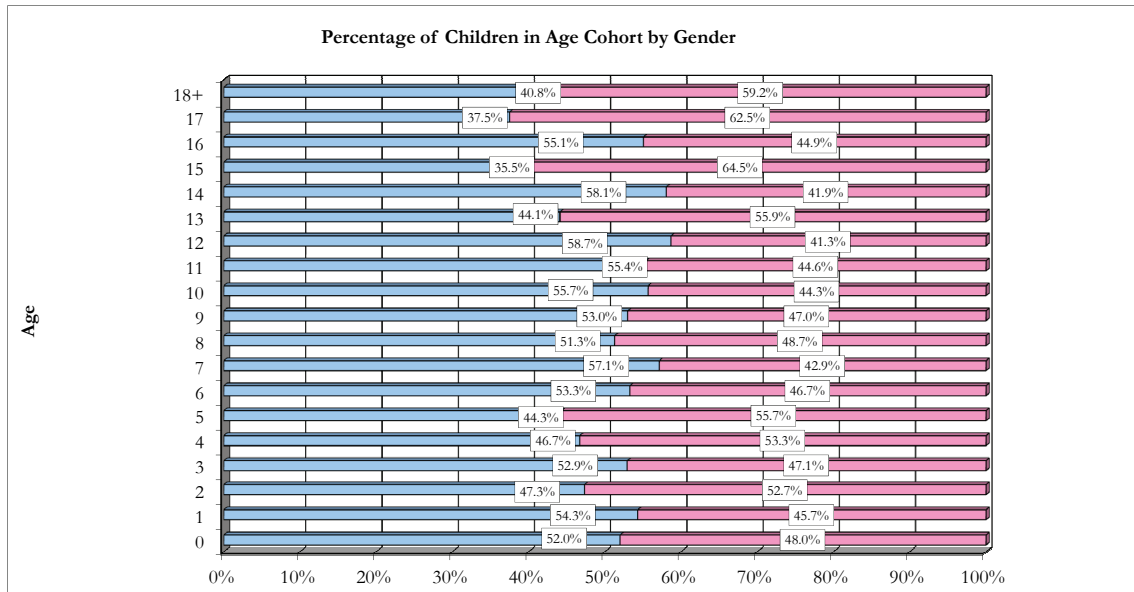
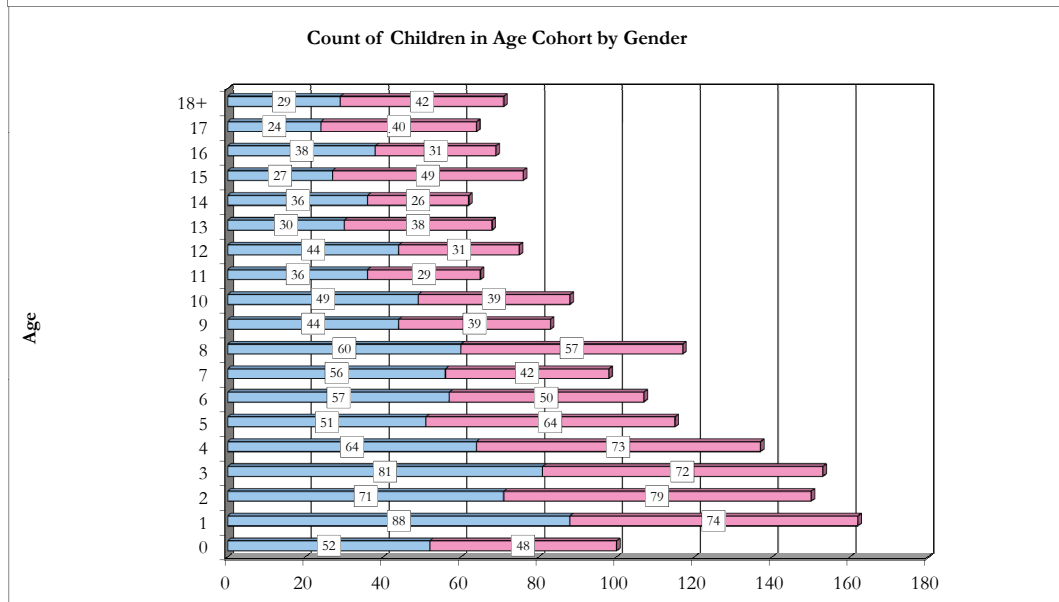


All Children in Alaska OCS Out-of-home Placement for the Month of December, 2011, by Gender and Age.



Age	Male	Female
0	52	48
1	88	74
2	71	79
3	81	72
4	64	73
5	51	64
6	57	50
7	56	42
8	60	57
9	44	39
10	49	39
11	36	29
12	44	31
13	30	38
14	36	26
15	27	49
16	38	31
17	24	40
18+	29	42



Out-of-home placement is the last option considered when reasonable efforts to protect a child in his or her own home have been exhausted by OCS. The first preference considered in all out-of-home placements for a child or youth is a relative's home. When it is not possible to place a child with a relative it is necessary to place the child in a licensed foster home. Residential care facilities may offer short-term emergency shelter as well as more long-term residential treatment.

All Children in Alaska OCS Out-of-home placement for the month of December, 2011. Age is the age of the child (in years) on December 31, 2011.

Data Source: ORCA. Program used to tabulate statistics: monthly_ooH_web.sas.
 Data in this report is current as of January 3, 2012. Subsequent reports with the same date parameter will contain up-dated statistics.
 if you have any questions regarding this data please forward your inquiry to ocs@alaska.gov