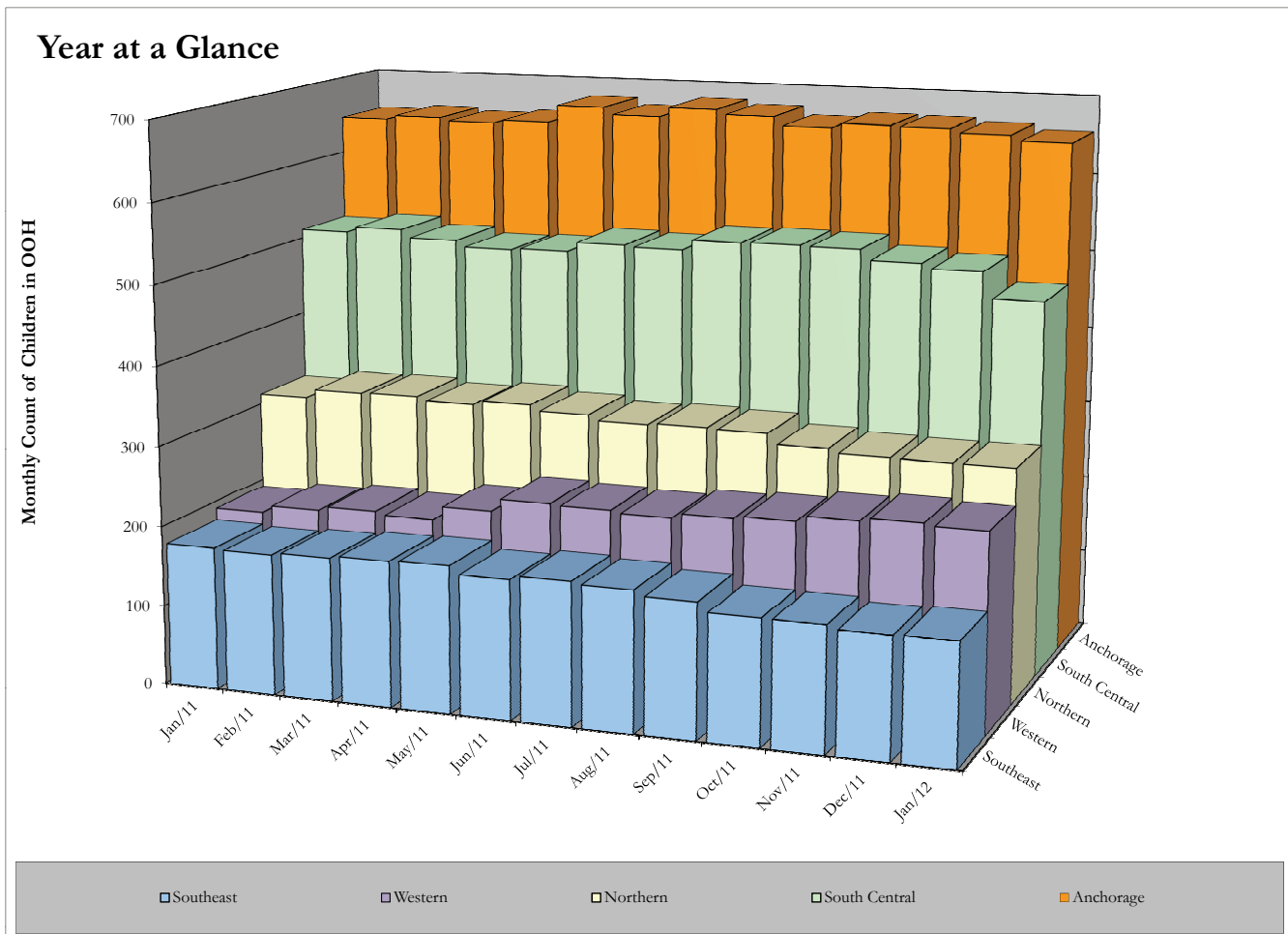


All Children in Alaska OCS Out-of-home placement between January, 2011, and January, 2012, by Region.

Region	Jan-11	Feb-11	Mar-11	Apr-11	May-11	Jun-11	Jul-11	Aug-11	Sep-11	Oct-11	Nov-11	Dec-11	Jan-12
Anchorage	648	653	649	653	675	666	678	672	661	667	666	661	654
Northern	316	327	328	323	328	321	314	316	314	301	296	295	295
South Central	513	520	510	502	504	516	514	527	528	527	514	508	475
Southeast	179	177	180	183	184	174	179	176	169	157	156	151	152
Western	194	203	208	204	221	237	235	232	238	241	248	252	249
Total	1,850	1,880	1,875	1,865	1,912	1,914	1,920	1,923	1,910	1,893	1,880	1,867	1,825

Out-of-home placement is the last option considered when reasonable efforts to protect a child in his or her own home have been exhausted by OCS. The first preference considered in all out-of-home placements for a child or youth is a relative's home. When it is not possible to place a child with a relative it is necessary to place the child in a licensed foster home. Residential care facilities may offer short-term emergency shelter as well as more long-term residential treatment.



Data Source: ORCA. Program used to tabulate statistics: monthly_ooh_web.sas.
 Data in this report is current as of February 2, 2012. Subsequent reports with the same date parameter will contain up-dated statistics.
 If you have any questions regarding this data please forward your inquiry to ocs@alaska.gov.